

# FaithPLM Solutions Brochure

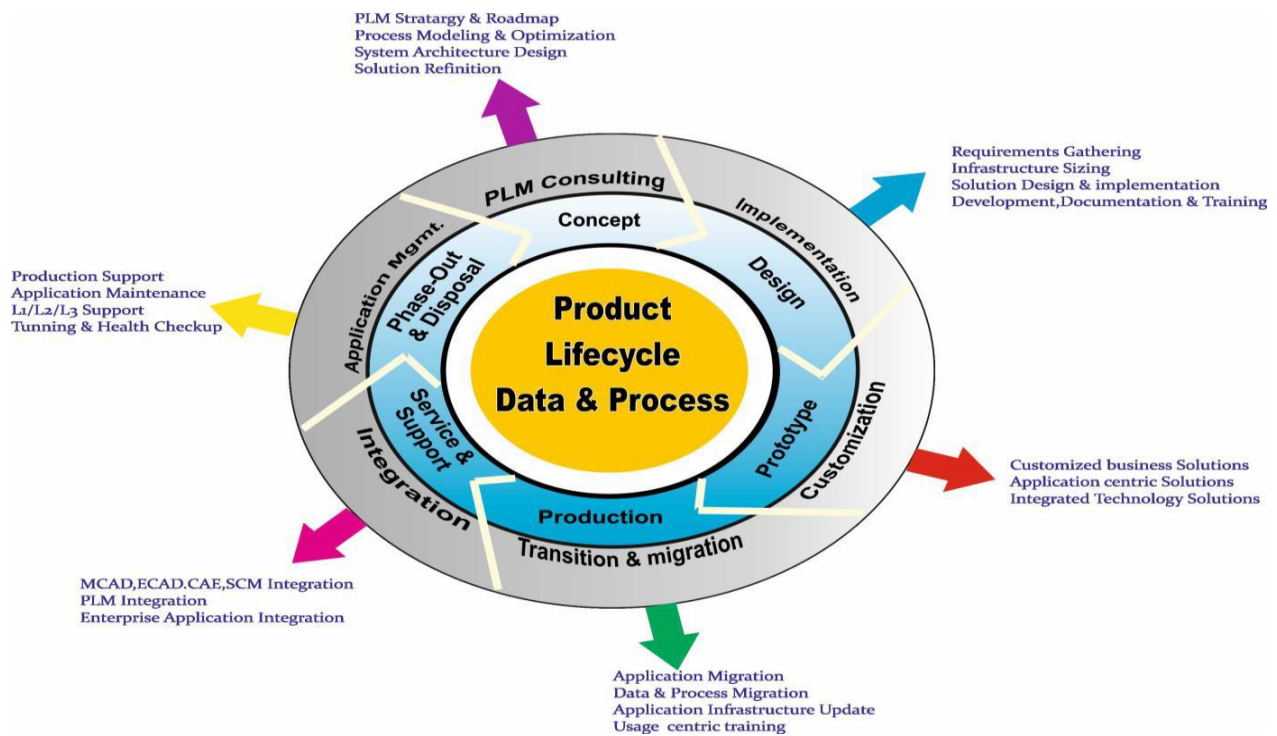
## Who we are?

FaithPLM is an Engineering Solutions and Product Development Company focussing on product lifecycle management solutions using SIEMENS Teamcenter PLM,run by a team of multidiciplinary experts having in-depth experience in delivering cost effective solutions to customers across the globe.

We offer cost effective solutions on product lifecycle management which help companies to reduce lead time & cost with improved quality and revenue by efficiently aligning expertise, processes and system involved.

We offer full range of PLM services from functional consulting, implementation, integration, data migration, upgrades, performance tuning, health check-up, supports, training and staffing.

We have very good experience across the industry verticals including automotive, aerospace and power in large, medium and small implementation. FaithPLM has wide working experience of 10+ projects in Teamcenter PLM implementation, customization & development.



## Our expertise in niche areas

- Teamcenter Unified with MultiCAD, MultiPlatform, Multisite
- Teamcenter Manufacturing
- Teamcenter-ERP Gateway
- Teamcenter Simulation Data Management
- Teamcenter Supplier Relationship Management
- Teamcenter Community Integration
- Teamcenter Mechtronics Process Management



- ❑ Teamcenter Compliance Management
- ❑ Teamcenter Reporting and Analytics
- ❑ TC SOA, TCGS and Web-services based Integrations

## Our offerings

FaithPLM Solutions integrate the real power of SIEMENS PLM into your business with the help of in-depth industry domain knowledge and the unbeatable expertise and experience in the application of PLM to develop and deliver solutions to address customer business process and data management challenges. We offer following services:

### Business Process Consulting:

Develop a clear PLM vision by aligning customer business strategy, Implementation strategy alignment with customer business objectives, process improvement and process re-engineering to define & implement measurable benefits which includes Technology Assessment, PLM Blueprinting, Infrastructure Assessment & PLM Audit.



**Implementation:** End-to-End implementation using SIEMENS Teamcenter PLM suite of products that includes requirement gathering, product deployment & integration, codeless & codeful configurations, capability mapping for various business data & process requirement, upgrades, testing, training, documentation & rollouts.



**Enterprise Application Integration:** Legacy system integration, ERP, CRM, MES integration, Other PLM system integration with Teamcenter PLM.



**Transition and Migration:** Site Consolidation, Legacy System Data & Process migration, Data clean-up & mapping, data migration in system coexistence



**Training:** Standard and customer usage specific training by SIEMENS certified trainers which enable usage & implementation of various PLM solutions to its fullest extent for business benefit.



**Administration & Support:** Teamcenter system day to day usage support, maintenance, health check-up and performance tuning.

**Solution Consulting:** Consulting on Teamcenter System Infrastructure, business requirement mapping best practices, configuration, integration, customization and system optimization which help customer to efficiently implement the various solutions offered by Teamcenter PLM and to extract the expected business value.

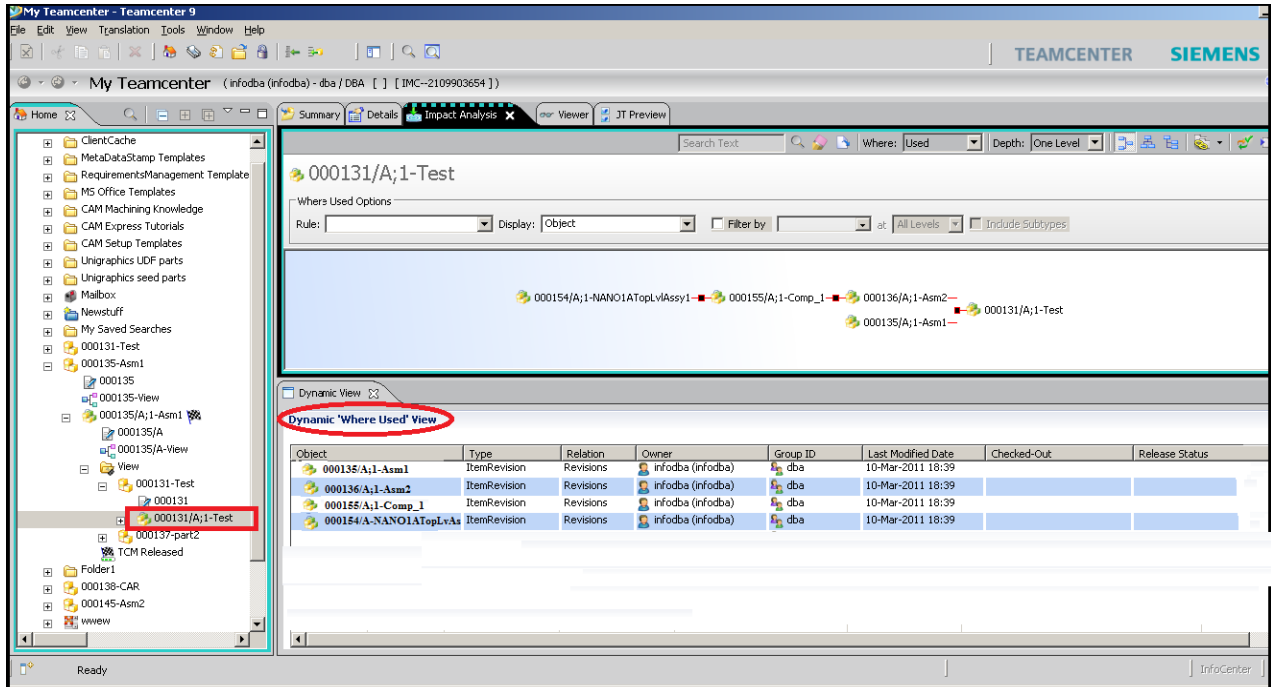


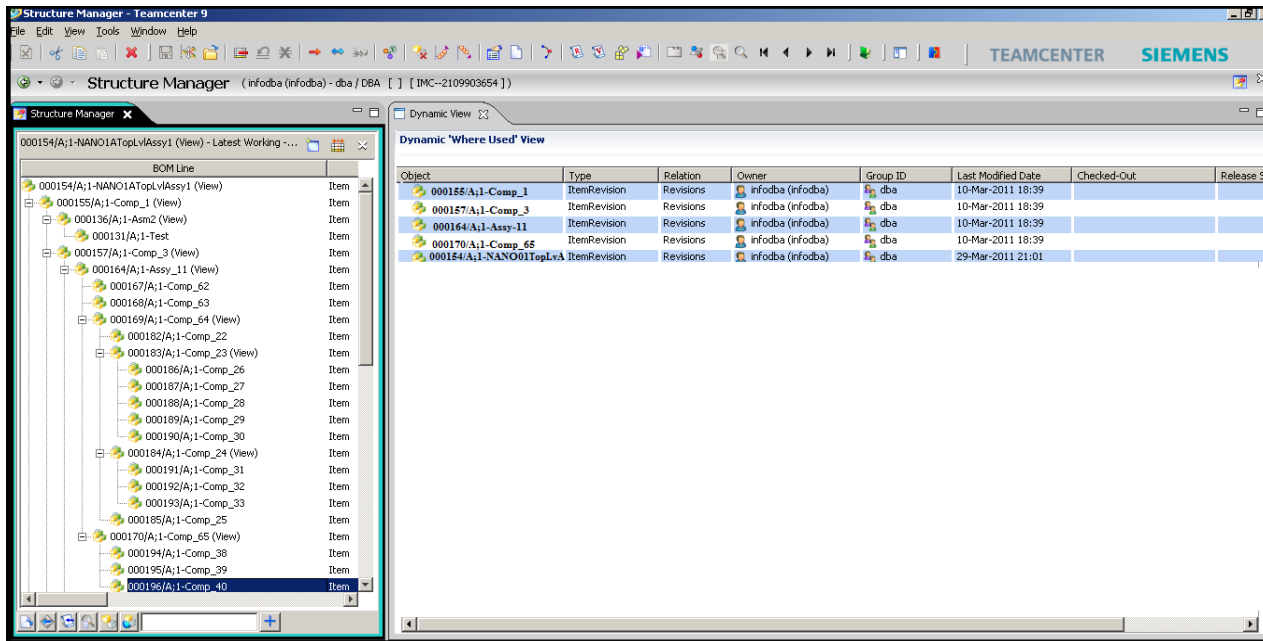
**Software Development:** Development of Software connector, Legacy tools integrator, Data migration tool, Data cleanup tool, Process Planning, custom tool, Insight PDM, SharePoint Customization.

**CAD/CAM/CAE Solutions:** Knowledge Based Engineering, CAD Customization, Legacy CAD Data Conversion & Upload to PLM, CAE analysis, CAD data conversion using CMM.

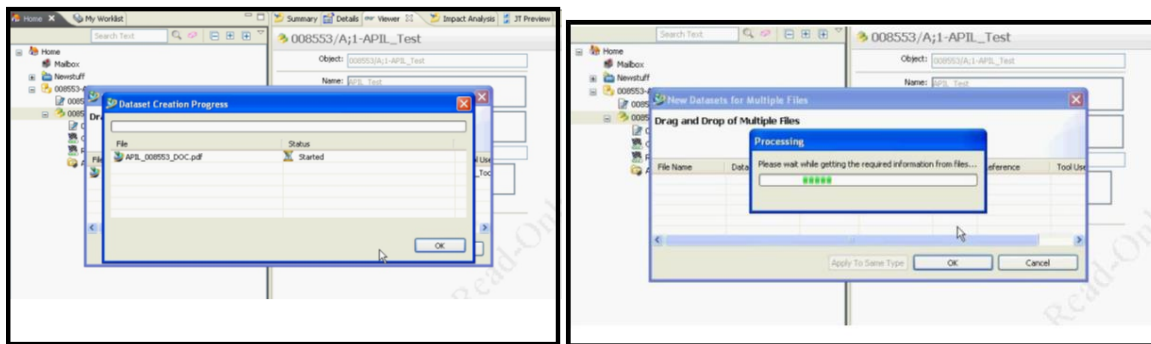
## Our products

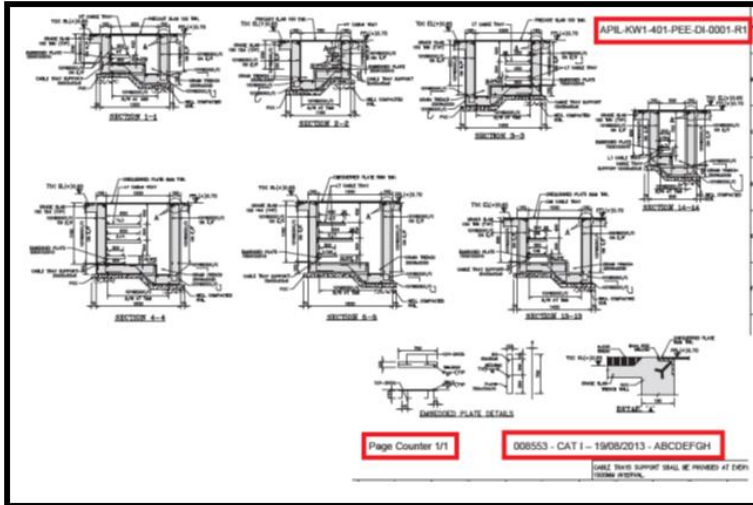
**Dynamic Where Used:** This tool helps companies to dynamically view the component assemblies usage report which helps to make right decision during substitute/alternate selection, component replacement in change management.





**Design Data Intelligent Watermarking:** This tool helps to get ink marking done through workflow as per the customer requirement like logo, notes, IP, custom info on design document.





**Mobile Integrated Process Alert:** This tool helps designer/manager to set late notification frequency and get the alert on regular interval on their mobile. This help to bring the information closer to user at right time which helps them to take corrective action.



### Consulting Services

- PLM Vision & Strategy
- Technology Assessment
- PLM Blueprinting
- Infrastructure Assessment
- PLM Audit

### Implementation Services

- Process Definition
- Requirements
- Solution Definition
- Design and Development
- Validation
- Integration (ERP, CAx, Legacy)
- Data Migration Services

### Operations and Maintenance

- Helpdesk
- Global Deployment
- Performance Tuning
- PLM Maintenance
- Technology upgrade
- PLM Hosting