

FaithPLM Solutions

Simplifying complex enterprise...



Leading Bulgarian manufacturer of packaging machines for beverages, food and non-food products implements Teamcenter Rapid Start

About Client

Our client established in the year of 1990 entered into the construction and manufacturing of machines for canning industry. Client steadily established on the markets of East Europe, Middle Asia and the EU member states, offering to its clients complete dedicated engineering solutions and production lines, following the latest trends in the area. It offers engineering and complete technological lines with integrated logistics solutions and complete process monitoring. The engineering staff works with a high-class CAD-CAM system and the complete manufacturing process is controlled via ERP system.

Business Challenge

There are both internal and external drivers and needs for PLM systems: the internal reasons include the need to improve the efficiency of innovation process and to speed up the innovation as well as improve or enable network collaboration. The external needs for increasing use of PLM systems are the common macro trends in many industries: globalization and competition which often lead to distributed cooperative product development.

Considering the above points customer realized the strategic importance of implementing PLM and its long term benefits and thus selected Teamcenter Rapid Start, a world class proven tool for all PDM/PLM functionalities.

Some of the business challenges were

- Managing Extended Products
- Collaboration and Communication
- Process capability to manage complex products
- Process Automation
- CAD data Migration
- PLM-CAD Synchronization
- Continuous Support

Solution

While involved in this engagement we delivered following solutions

- **Teamcenter Rapid Start**

Implementing PDM/PLM software without significant modifications helps companies achieve benefits more rapidly and get up to speed quickly and then grow from there to gain further benefits. Because of its preconfigured and easy to deploy behavior, we selected TcRS to implement and mapped customer requirements. This leads to reduction in deployment time and in-turn money. With almost 20+ authors, we deployed TcRS using MSSQL Server 2008 and integrated with existing CAD software SolidEdge

- **Enhanced Design Process**

One of the major concern of implementing PLM solution is rapid development. With our innovative approach we designed enhanced part release process to take collaborative decisions with seamless communication. We Implemented heavy workflow processes so as to leverage maximum benefits out of the system. Custom workflow

handlers were written to perform specific operations which were not available OOTB. Product release processes were designed in a such way that it would set dependency between release processes of child parts with those of parent assemblies.

➤ **Project Id Smart Coding**

Customer needed a different Item ID naming convention based on the various criteria selected by user to classify data, maintain its uniqueness and for many others reasons. With the existing smart coding functionality we implemented smart coding as per customer's project codes.

➤ **PLM-CAD data Synchronization**

With the availability of existing attribute mapping functionality we achieved PLM-CAD data synchronization for SolidEdge and Teamcenter very effectively and efficiently.

➤ **Teamcenter Client for External Stakeholders**

Using existing Teamcenter client for Microsoft office functionality we implemented Teamcenter client for external stake holders so as to take specific data from Teamcenter Vault and disseminate the same to vendors and partners.

➤ **Data Security**

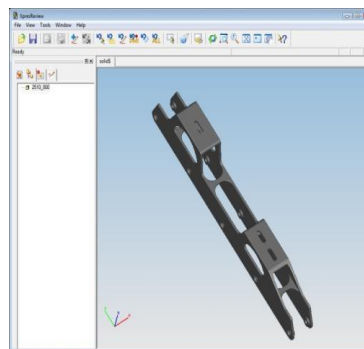
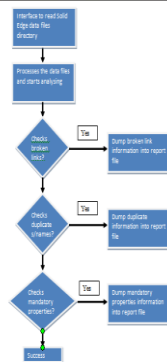
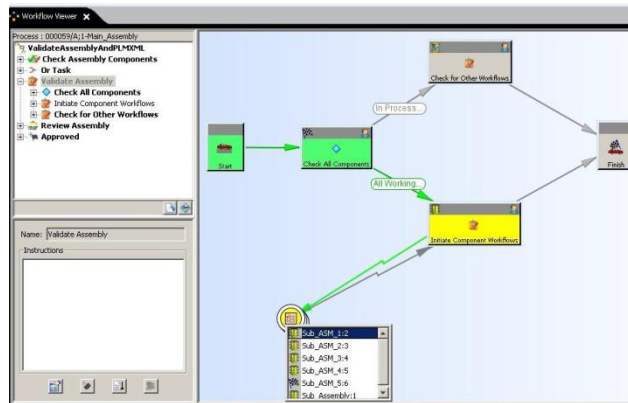
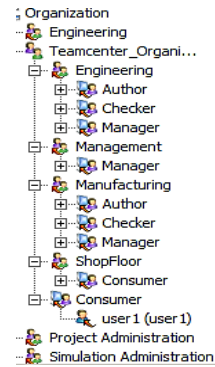
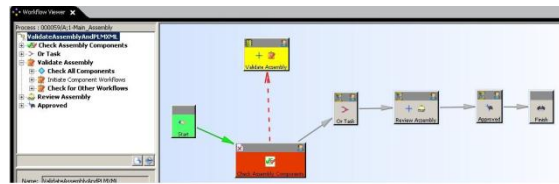
Solution was designed while putting valid access privileges at various stages across the process so to ensure the data security at each stage of the process. Detailed auditing set and made available to administrators.

➤ **Data Migration**

Custom utilities were written to migrate legacy CAD data. With the heavy storage of SolidEdge CAD data it was necessary to write custom utilities to upload CAD data to Teamcenter Server and at the same time it was essential to maintain data consistency and retain minimum broken links and in turn less data loss.

➤ **Customization**

With, Teamcenter Rapid Start, TcRS's pre-configured and easy to deploy behavior most of the requirements or functionalities were mapped using configuration and codeless customization but still extensible TcRS allowed us to customize Teamcenter for specific functionality to work.



Result

Based on the solutions we provided, our client now has a solid foundation to align its PLM vision in accordance with the business process and thus leveraging maximum benefits out of it. These Solutions helped our client on various fronts:

- Reduction in product development time
- Establish suitable design practices
- Ensure collaborative decision making while reviewing design data.
- Unified communication platform to put all the stakeholders at each stage of the process
- Fast dissemination of knowledge, documents and expertise
- Better Organized Information and thus easier to find
- Improved Productive
- Standardization and transparency which leads to improved process and product quality

Why FaithPLM Solutions?

Our deep-set commitment to our customers defines how we do business. Our customer centric engagement model enables our customer to meet their business goal effectively and efficiently. With the strong functional expertise and solution designers we've enabled our customers We support customer's business goals and offer continuous services/support based on the requirement. Whatever customer's business needs, we have the in-depth knowledge, processes, tools and relationship-based approach to put the right solution in right place at right time.

FaithPLM Solutions

Flat no. 106, Shitole Empire
Famous Square, New Sangvi
Pune-411027
Maharashtra
India
Ph: +91-020-65000685
www.faithplm.com